

SUBJECT: Renewable Distributed Generation (DG) Facilities Interconnection

The purpose of this policy is to help customers determine North Central Public Power District's (NCPPD) interconnection guidelines with respect to various sizes of Renewable Distributed Generation (DG) Facilities.

GENERAL INFORMATION:

- A. Net metering is available to eligible customers whose electric service is supplied by North Central Public Power District (NCPPD) with the exception of irrigation services (Rates 11, 12, 13, 14 and 37); pivot drive services (Rates 10 and 20) and Seasonal services (Rates 8, 58, 98, 88, 9, 99 and 94). These electric services are not eligible for Net Metering.
- B. Renewable Distributed Generation (DG) Facility – 25 Kilowatts (kW) or Less Capacity
  - 1. Any interconnection with NCPPD's distribution system for a DG facility with 25 kW or less may be net metered by NCPPD.
  - 2. Net Metering shall be available to Customer-Generators that meet the conditions per Policy Bulletin 4000 – Net Metering.
- C. Renewable Distributed Generation (DG) Facility – Greater than 25 Kilowatts (kW) Capacity
  - 1. Any request for interconnection with NCPPD's distribution system for a DG facility with greater than 25 kW capacity will be required to contact Nebraska Public Power District (NPPD) for interconnection; however, unless the facility is Certified by the Federal Energy Regulatory Commission (FERC), NPPD will not be required to purchase the output.
  - 2. Any output from a Non-Certified FERC DG Facility greater than 25 kW capacity will not be purchased by NCPPD.

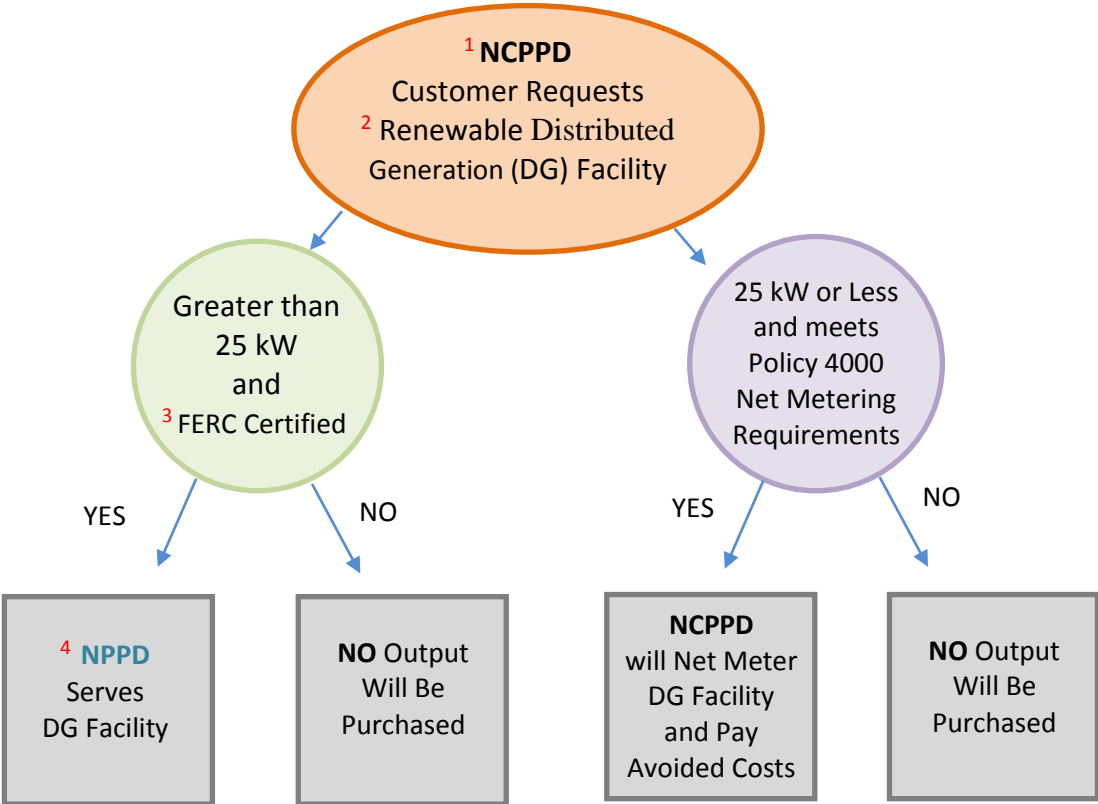
Reference Exhibit A - Renewable Distributed Generation Facility Interconnection Decision Tree

Disclaimer: The Board of Directors of North Central Public Power District reserves the right to amend or rescind this policy at any time.

Date Adopted: 11-27-17  
Date Revised: 12-18-17  
Date Revised: 02-26-18

Secretary: \_\_\_\_\_

Renewable Distributed Generator (DG) Facility Decision Tree



- 1 – **NCPPD** – North Central Public Power District
- 2 – **Renewable Distributed Generation (DG) Facility** – Generator that generally has no fuel storage or requires an auxiliary steam-consuming process to be operating in order to generate. Examples include wind and photo voltaic generators.
- 3 – **FERC** – Federal Energy Regulatory Commission
- 4 – **NPPD** – Nebraska Public Power District